



ConneXt Pro **Enterprise gas detection for** **real-time safety intelligence**

The right gas information. At the right time.
For the right decisions in the moment.

From data to insight in a fast-changing world

ConneXt Pro. Helping you protect your workers, prevent an incident, increase productivity and maximize uptime.

As your industrial operations become more complex, challenging and dispersed, threats can emerge out of nowhere. That's why it's never been more important to get the right safety data – at the right time – so you can make more informed decisions in the moment.

Is toxic gas leaking from your equipment? Which gas? At what concentration? Which workers have been exposed, and where are they? Would you have the information you need to correct a problem before it becomes a crisis?



Real-time safety intelligence

ConneXt Pro, an enterprise solution for gas detection, harnesses the Internet of Things (IoT) to give you real-time insights on gas threats. So you can **know what's happening, in the second it's happening, and where it's happening** – and act on it with speed and precision.

With ConneXt Pro, gas readings and alarms are no longer limited to the worker who's wearing the gas detector. And you don't have to wait for workers to report an alarm or dock their detectors before learning about incidents.

Instead, ConneXt Pro combines a permanent wireless infrastructure with wireless portable gas detectors and remote monitoring software to give you a real-time view of:

- The readings on each portable gas detector
- Gas alarms throughout your operations
- Each worker's location
- Immediate notification when a man is down
- The compliance status of each gas detector

Remote visibility on gas detection and worker location



It's all centralized in a single map-based display that's accessible from any computer with an internet connection.

From safety intelligence to strategic advantage

With real-time visibility on the gas status of your operations, you can act with more agility to keep your employees compliant, productive and safe 24/7.

You're better equipped to:

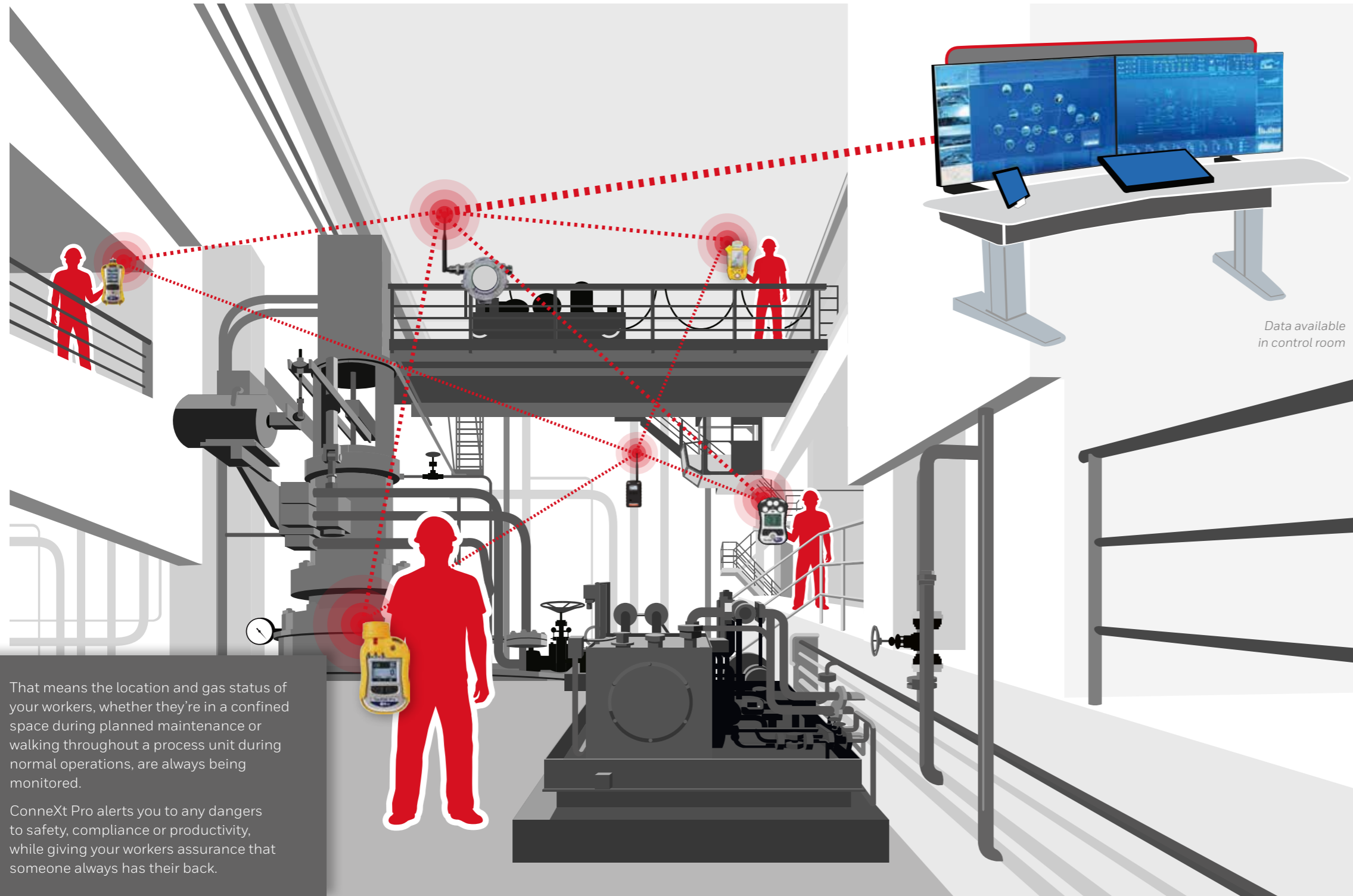
- Address small issues before they become big ones
- Protect uptime and prevent unnecessary evacuations
- Dispatch the right response in an emergency
- Manage risk and optimize operations
- Protect your workers
- Enhance your corporate safety intelligence



DCS integration of gas detector data through OPC UA

Real time. All the time.

ConneXt Pro is a permanent wireless infrastructure for continuous plantwide gas monitoring.



That means the location and gas status of your workers, whether they're in a confined space during planned maintenance or walking throughout a process unit during normal operations, are always being monitored.

ConneXt Pro alerts you to any dangers to safety, compliance or productivity, while giving your workers assurance that someone always has their back.

Data available in control room

Single-gas, multi-gas and more

ConneXt Pro is compatible with a wide range of Honeywell portable wireless detectors, including single- and multi-gas personal monitors, multi-threat survey monitors and semi-fixed area monitors. This versatile portfolio is especially important as your operations become more complex, exposing workers to additional hazards and increasingly requiring personal multi-gas detectors to comply with evolving regulations.



Honeywell is bringing the internet of things to industrial safety.

ConneXt Pro. Keeping you connected to your workers.

Centralized command for total awareness



24/7 protection and visibility

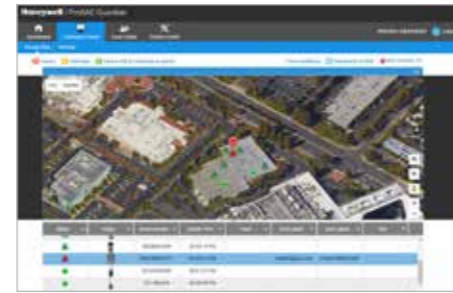
- See your workers' gas detector readings at all times
- Know their location and safety status
- Get an instant alert whenever a detector goes into alarm
- Plan the right response
- Quickly disseminate information, for example automatic email notifications
- Workers in high risk areas have an extra layer of security
- When workers feel safe, they're more productive



Worker exposed, alarmed, location and condition determined

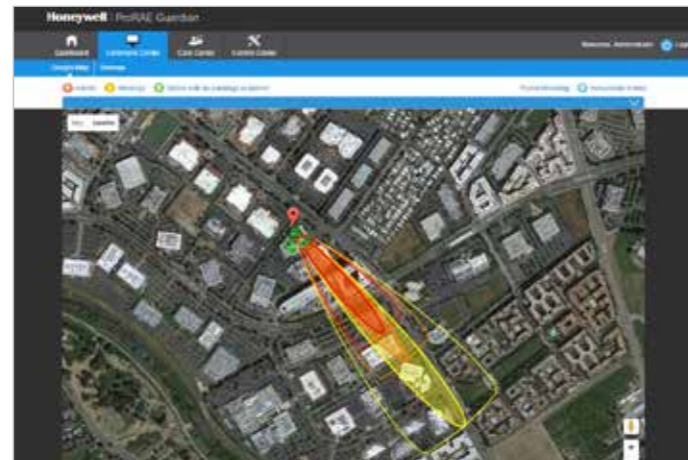


HSE Officer receives alarm location; alerts responders



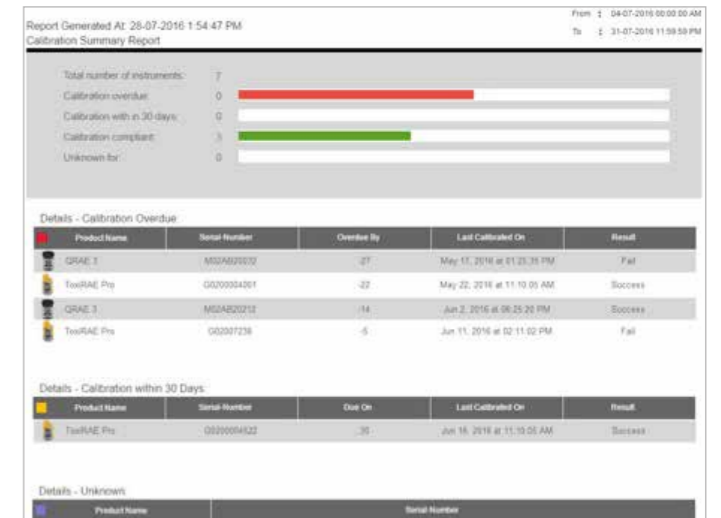
Informed strategies for evacuation, emergency response and man-down rescue

- Man-down alerts and panic buttons, so if a worker is in trouble, you will immediately know about it
- Accurately identify which worker is exposed and where to look for them
- Determine the correct personal protective equipment that responders should wear
- Use real-time data to collaborate with teams on the ground or offsite experts
- Detect plume movement and plan evacuation and shelter



Worker and Enterprise Productivity

- Health and Safety professionals can spend weeks or even months generating incident and safety reports
- ConneXt Pro automates report creation giving critical time back for other important tasks
- Use ConneXt Pro to easily assess compliance with government regulations and company policies
- Quickly correct any problems, avoid regulatory fines and manage liability costs



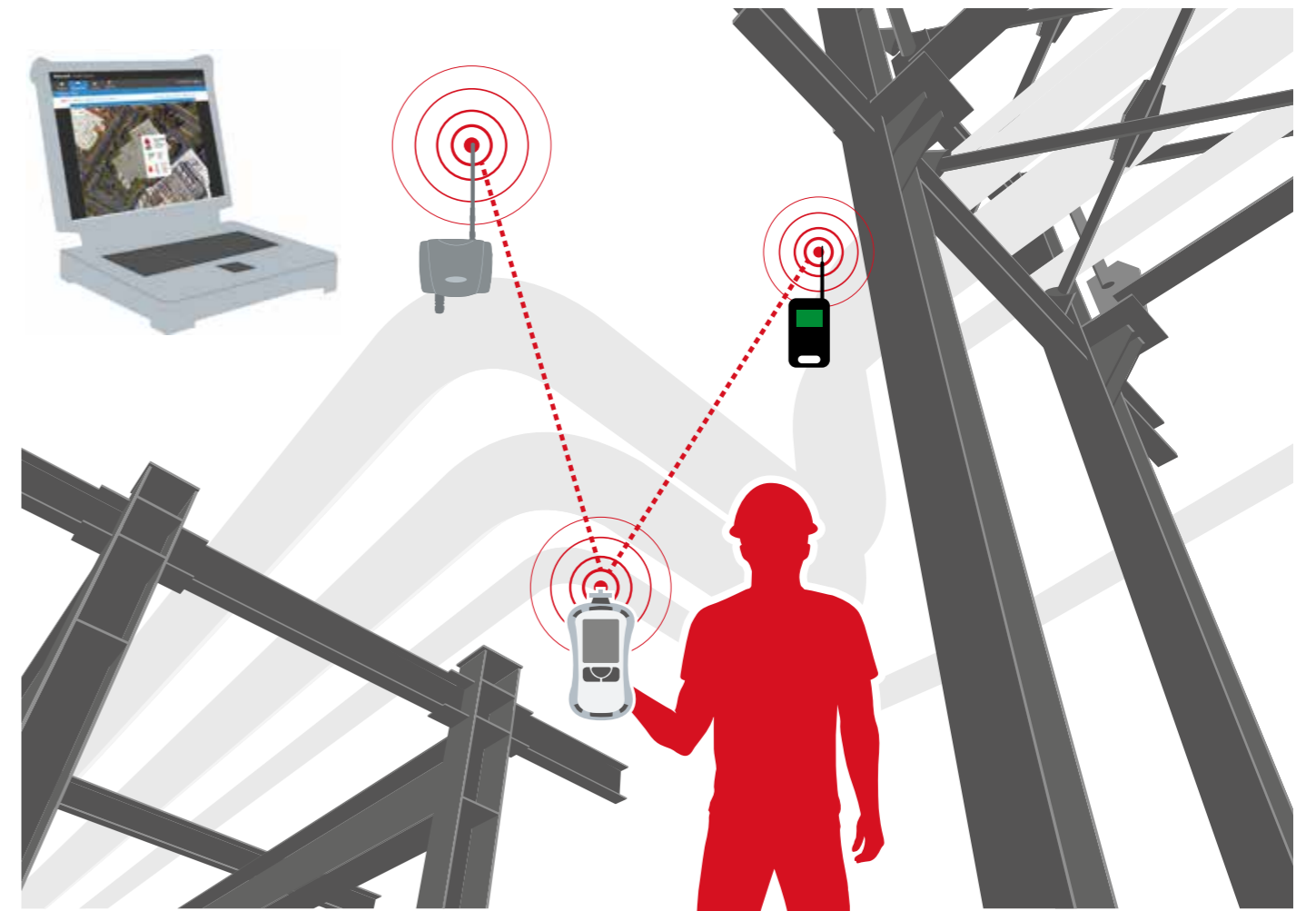
Condition monitoring and maintenance

- See all gas leaks that are detected not just alarms, giving valuable insight into potential maintenance requirements
- Identify trends in health and safety, so you can proactively address them
- See patterns of exposure, to what gas, in what location, and at what time
- Translate data to insight, so you can monitor workers' health and avoid sending them into a dangerous situation



A new level of wireless flexibility.

With **ConneXt Pro**, it's never been more cost-effective to add real-time gas monitoring to your wireless infrastructure.



Whether you have Wi-Fi throughout your operations, only in some parts or in none at all, you can use ConneXt Pro for real-time gas monitoring. And thanks to the solution's flexibility, you can start with a handful of portable gas detectors in one area before taking ConneXt Pro to the rest of the enterprise.



*Location beacon (wire free) available for GPS denied areas.
ConneXt Pro makes infrastructure easy with battery-powered beacons.*

Create value throughout your enterprise.

As an enterprise solution for gas detection, ConneXt Pro meets the needs of stakeholders throughout your organization.



EXECUTIVE

Want to demonstrate your company's safety leadership?

In today's real-time world, when a single safety incident can ripple across the globe at the speed of a tweet, ConneXt Pro gives you real-time safety intelligence. So you can:

- Protect your brand
- Build a safer enterprise — to attract, retain and optimize talent
- Potentially reduce insurance costs and prevent claims
- Reduce labor costs by automating parts of your safety program



HEALTH, SAFETY & ENVIRONMENTAL MANAGERS

If a worker is exposed to toxic gas or a detector is out of compliance, would you know about it in time?

With real-time monitoring through ConneXt Pro, you can see all gas data on your workers' detectors — all the time. So you won't be surprised to learn about a gas alarm or a noncompliant device that puts workers at risk. Use ConneXt Pro to:

- Manage gas safety and compliance efficiently and accurately
- Automate incident reporting and fleet management
- Ensure environmental responsibility



INFORMATION TECHNOLOGY

Want to get more value from your industrial Wi-Fi?

With ConneXt Pro, use IoT to add continuous plantwide gas monitoring to your wireless network — for real-time safety intelligence that helps your company manage risk and improve the business. That's a great way to improve the return on your Wi-Fi investment — with an accessible cost, strong data security, interoperability and compliance with your IT procedures. Don't have Wi-Fi? ConneXt Pro also works in a mesh network.

And you can even equip your workers with smartphones to complement Wi-Fi and Mesh, ensuring continuous safety monitoring even when they are not within fixed wireless infrastructure range.



PLANT & OPERATIONS MANAGEMENT

If your equipment has a carbon dioxide leak, would you find out about it before it's too late?

ConneXt Pro is a way to protect your workers, while also protecting your uptime and profits. For example, one energy company used ConneXt Pro to get early visibility on a gas leak in a tank farm — and avoided \$200,000 in maintenance costs. ConneXt Pro also prevents misinterpreted readings on gas detectors, so you can avoid unnecessary evacuations or shutdowns that can cost hundreds of thousands of dollars in downtime.



ENGINEERING & INSTALLATION

Want to enhance your wireless infrastructure, with no installation costs?

Thanks to battery-powered location beacons, you can use ConneXt Pro to add capability to your wireless infrastructure — without adding significant costs. That means more wireless access points without more wiring, so you can:

- Reduce your cost of ownership
- Reduce installation time
- Minimize complexity
- Improve enterprise safety

The Honeywell Advantage

Honeywell RAE Systems is the pioneer of wireless gas detection, and we continue to lead the way in bringing IoT to industrial safety. And as a global leader in safety technology, Honeywell has addressed some of companies' toughest challenges in space, defense, industrial operations and more. So with Honeywell, you can rest assured that ConneXt Pro will deliver the highest levels of quality, reliability, connectivity and accuracy, helping you manage risk and make better decisions for your business.



Part of ConneXt Safety Solutions

ConneXt Pro is part of ConneXt Safety Solutions, delivering real-time visibility on safety threats, so you can make faster, more informed decisions to maximize safety, productivity and compliance.

ConneXt Safety Solutions come in several varieties, enabling you to remotely monitor safety, productivity and compliance – from a lone worker to an entire plant.



ConneXt Loneworker

Remote workers are only a click away

ConneXt Pack

Turnkey kit for small teams

ConneXt Plus

Configured system for projects up to several days

ConneXt Pro

Enterprise solution for 24/7 monitoring

ConneXt Safety Solutions are part of IIoT by Honeywell

Connecting your people, processes and assets to transform operations

Honeywell Gas Detection

Honeywell is able to provide gas detection solutions to meet the requirements of all applications and industries. Contact us in the following ways:

Find out more:

www.honeywellanalytics.com
www.raesystems.com

Americas

Honeywell Analytics Distribution Inc.
 405 Barclay Blvd.
 Lincolnshire, IL 60069
 USA
 Tel: +1 847 955 8200
 Toll free: +1 800 538 0363
 Fax: +1 847 955 8210
detectgas@honeywell.com

RAE Systems by Honeywell
 Phone: 408.952.8200
 Toll Free: 1.888.723.4800
 Fax: 408.952.8480

Technical Services

EMEA: HAexpert@honeywell.com
 US: ha.us.service@honeywell.com
 AP: ha.ap.service@honeywell.com

www.honeywell.com

Europe, Middle East, Africa

Life Safety Distribution GmbH
 Javastrasse 2
 8604 Hegnau
 Switzerland
 Tel: +41 (0)44 943 4300
 Fax: +41 (0)44 943 4398
gasdetection@honeywell.com
 Customer Service:
 Tel: 00800 333 222 44
 (Freephone number)
 Tel: +41 44 943 4380
 (Alternative number)
 Fax: 00800 333 222 55
 Middle East Tel: +971 4 450 5800
 (Fixed Gas Detection)
 Middle East Tel: +971 4 450 5852
 (Portable Gas Detection)

Asia Pacific

Honeywell Industrial Safety
 7F SangAm IT Tower,
 434, Worldcupbuk-ro, Mapo-gu,
 Seoul 03922,
 Korea
 Tel: +82 (0) 2 6909 0300
 Fax: +82 (0) 2 2025 0328
 India Tel: +91 124 4752700
 China Tel: +86 10 5885 8788 3000
analytics.ap@honeywell.com

DS01169_V1_0716_EN
 Copyright © 2016 Honeywell International Inc.
 All rights reserved.

Honeywell