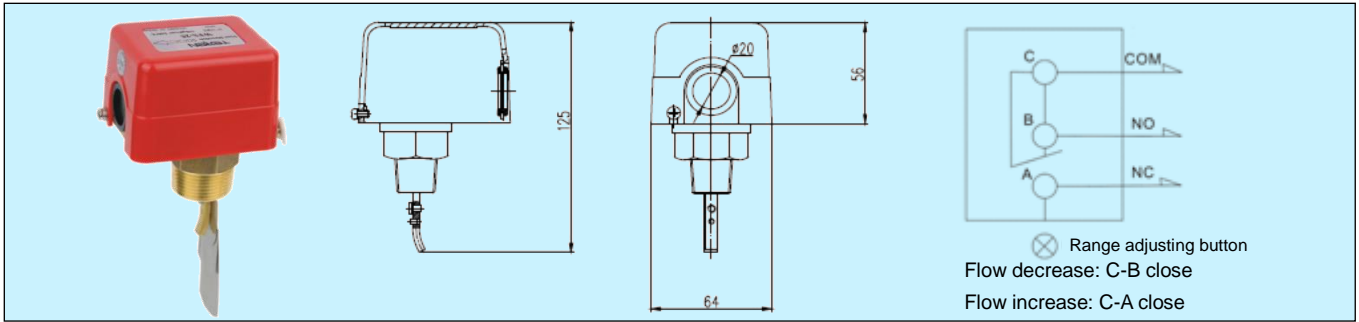


# WFS Water Flow Switch



## Applications & Features

The paddle type WFS is designed to control the flow rate of water, chilled water, cooling water or other liquid system.

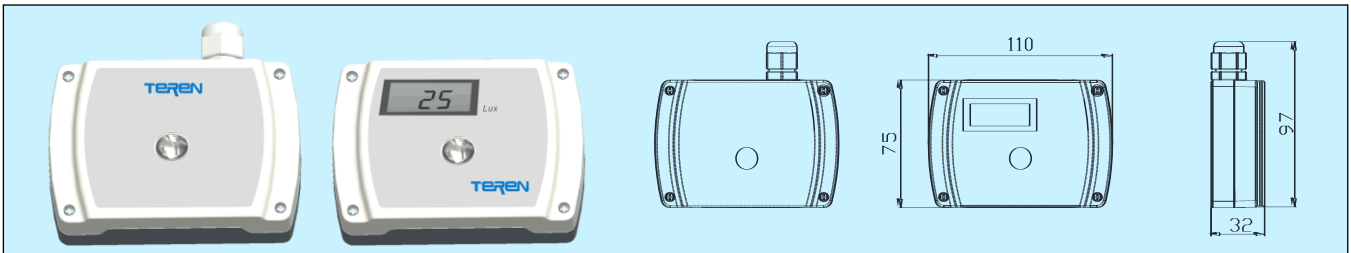
### Specifications

- Contact:** SPDT, 10A/250VAC
- Paddle materials:** Stainless Steel
- Medium connection:** Brass, 1" NPT
- Electrical connection:** Screw terminals
- Switch body materials:** steel
- Cover materials:** ABS
- Contact cycle:** 500K
- Environment temp.:** 5~50°C
- Medium temp.:** 5~100°C
- Working pressure:** 1.0Mpa (Max pressure: 1.6Mpa)
- Weight:** 0.5Kg

## Paddles Selection

ITEM	Range liter/min	D Band liter/min	Pipe		Paddle number
			in	mm	
1	16~32	6	1	25	1
2	22~50	8	1.25	32	2
3	30~72	9	1.5	40	2
4	55~110	15	2	50	2
5	70~130	20	2.5	65	3
6	105~200	30	3	80	3
7	250~480	50	4	100	4
8	480~920	90	5	125	4
9	720~1420	120	6	150	4
10	1420~2850	200	8	200	4

# ALS Ambient Light Sensor / Transmitter NEW



## Applications & Features

- ALS series are designed for detecting ambient light level. They can be widely used for lighting control applications in various indoor or outdoor environments such as warehouse, computer room, workshop, record room, library, school, shopping mall, smart home, hotel, park, airport and railway station, etc.
- High sensitive sensor and precise linear amplifier circuit, accurate measurement and temperature compensation, good long term stability and reliability
- Light and state of art housing supplies two different install and wiring ways, with high protect rate, delicate structure
- Power and output have over voltage and reverse polarity protection, high reliability and anti-interference capability

### Specifications

- Sensor:** High sensitive light sensor
- Measurement wave length:** 400~700nm, peak response 550nm, with match degree 99%(typical)
- Range:** 0~1000/2000/5000/10000 lux (jumper selectable)
- Accuracy:** ±5 %FS@25°C
- Repeatability:** <4%FS
- Thermal effect:** <0.01%FS/°C(typical)
- Response time:** <1s
- Output:** 0~10V/4~20mA (default), RS485/Modbus RTU

- Display:** 4 bit LCD
- Load resistance:** ≤500Ω (4-20mA), ≥2KΩ(0-10V)
- Power supply:** 16~28VAC/16~35VDC
- Working environment:** -30~70°C, 0~95%RH (Non-cond.)
- Storage temperature:** -30~70°C
- Housing:** fireproof ABS/PC
- Protection:** IP65 (except for the hole on the basement)
- Approval:** CE

## Models

Models	ALS		Ambient Light Sensor/Transmitter
Output	1		0~10V/4~20mA
	8		RS485/Modbus
Display	0		N/A
	1		LCD
Housing	0		PG9 Gland inlet cable
	1		Basement inlet cable

1. Illumination is the unit of light intensity, popular defined as flux (Lm) on unit area(m<sup>2</sup>), also known as lux.
2. Generally, in summer's sunny day the illumination will be 30~300,000 lux; cloudy day is 3~10,000 lux; sun rise/sun set is 300~400 lux. Illumination for indoor is 10~2000 lux for different lighting status and <1 lux during night without any lighting.